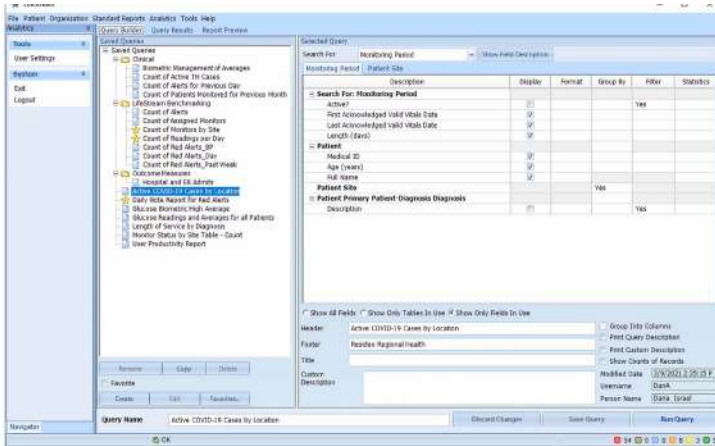


# LIFESTREAM™ ANALYTICS ADVANCED REPORTING TOOL



New! From Clear Arch Health

Access the power of data analytics and customizable reporting to deliver smarter, more informed patient care.

The LifeStream™ Analytics Advanced Reporting Tool is part of the LifeStream clinical monitoring system and is expertly designed to enable clinical teams to deliver smarter patient care for improved patient outcomes. Pre-configured reports are easily customizable and exportable. Additional options are available to help healthcare organizations analyze data, determine ROI and evaluate program success. This powerful tool features a wealth of capabilities to make remote care a decidedly sensible proposition for healthcare organizations, while ensuring quality patient care and system-wide effectiveness.

## PRODUCT OVERVIEW:

- Track Utilization and Drive Productivity
- Optimize Clinical Workflows and Resources
- Assess Clinical and Operational Efficiencies
- Evaluate Patient Satisfaction
- Compare Patient Profiles to Identify Patterns and Enhance Care
- Prioritize Patients' Clinical Needs Based on Tabular Trending Data
- Schedule Data Extractions to Run Automatically
- Export Data into Multiple Formats for Import into 3rd Party Tools (email, fax, archives, etc)
- Gain Insight into Remote Care Program Effectiveness
- **Integration with Clear Arch Touch Coming Soon!**

Learn what LifeStream Analytics can do for your healthcare organization!

Visit [www.cleararchhealth.com/life-care-solutions/](http://www.cleararchhealth.com/life-care-solutions/)



*Delivering the right care, at the right time.*

RPM & Remote Life Safety Solutions